



# Responses to Covid: policy, social enterprise, impact businesses and the social economy.

Webinar

Implemented by

9 July 2020, 1400-1600 GMT		
1.	Introduction to ICR	Irene Danquah, ICR Facility
2.	Introductions, participant aims and objectives	Owen Dowsett, British Council
3.	Context	Dan Gregory, SEUK
4.	Government policies – a) responding specifically to social enterprise and impact businesses and b) more widely	Dan Gregory, SEUK
5.	Exemplar – High Commission for Social and Solidarity Economy and Social Innovation	Sarah Prince-Robin, French Ministry for Ecological and Inclusive Transition
	BREAK	
6.	Responses c) at a sector-wide scale, including intermediaries, networks, funders and financiers and d) individual social enterprise responses at the community level	Maeve Curtin, SEWF
7.	Exemplar – Social enterprises responding across Africa	Kissy Agyeman-Togobo, Songhai Advisory
8.	Q+A / discussion	All
9.	Conclusions	Owen Dowsett, British Council



# 1. Investment Climate Reform (ICR) Facility

Irene Danquah, Investment Climate Reform Facility

Implemented by



# 1. Investment Climate Reform (ICR) Facility

<b>Funding</b>	11th EDF under the ACP-EU Partnership Agreement, together with BMZ and BC
<b>Objective</b>	Support the countries and regional institutions in Africa, Caribbean and Pacific countries in their public-private dialogue process to create a more conducive and sustainable investment climate.

## Technical assistance with up to 90 days for interventions:

- **Business Environment Reform** 
- **Business Environment for Sustainability** 
- **Public-Private Dialogue (PPD)** 

## Requests must:

- aim at improving the business and investment climate in an ACP country
- be part of a wider strategy, reform process, or PPD mechanism
- involve a PPD component 
- handed in by governmental organisations, business associations, development financial institutions (DFIs), and EU delegations in ACP countries

Implemented by



## 2. Introductions, Aims, Objectives

Owen Dowsett, British Council

Implemented by



# Objectives

- Give actionable examples and insights for policy makers and others that influence the business environment across Africa, the Caribbean and the Pacific to support social enterprises and impact businesses in mitigating the Covid-19 crisis.
- Stimulate interest amongst participants to get more tailored guidance in the form of a virtual clinic.

Implemented by





# 3. Context

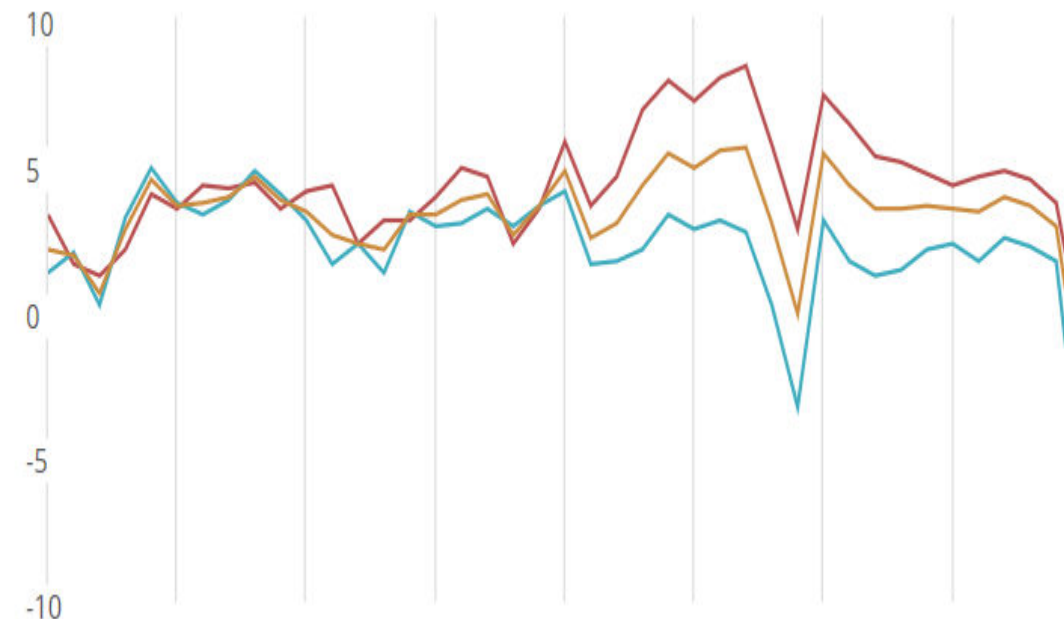
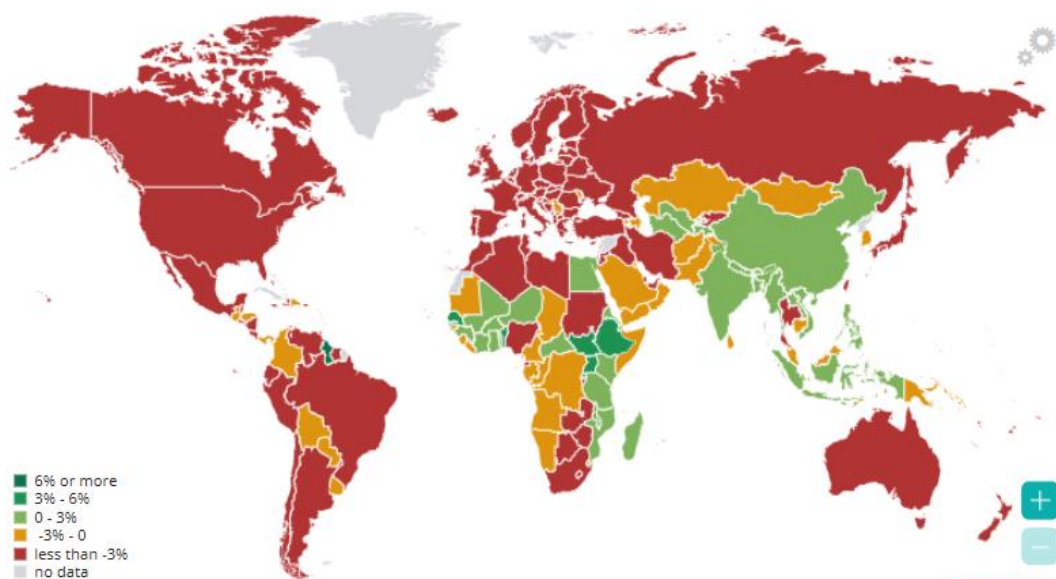
Dan Gregory, Social Enterprise UK

Implemented by



# The Covid Crisis

- At start of July, over 10 million cases reported worldwide and over half a million deaths
- Global fiscal support stands at about \$9 trillion, with around \$8 trillion accounted for by the G20) economies



Implemented by





### Americas

**5,317,792**  
confirmed cases



### Europe

**2,728,059**  
confirmed cases



### Eastern Mediterranean

**1,096,565**  
confirmed cases



### South-East Asia

**833,735**  
confirmed cases



### Africa

**318,432**  
confirmed cases



### Western Pacific

**218,704**  
confirmed cases



Source: World Health Organization  
■ Data may be incomplete for the current day or week.

# Social Enterprise, Impact Business and the Social Economy

Term	Independent of the state	Purpose	> 50% trading	Reinvests most of its profits	Reinvests all profits	Democratic	Measurable impact
SSE	X	X					
Social enterprise	X	X	X	X			
Social business (Yunus)	X	X	X		X		
Co-operative	X	X	X			X	
Association	X	X			X		
Impact business	X	X	X				X

Implemented by



# 4. Government policies – specific and generic

Dan Gregory, Social Enterprise UK

Implemented by

## 4a. Social economy specific Government policy (global)

### France

- High Commissioner for Social and Solidarity Economy and Social Innovation set up "liaison unit" with the network heads.
- SSE Relief Facility to offer simple, rapid and flexible emergency aid for enterprises, associations of less than 3 employees. Direct aid in the amount of 5,000 euros.

### Portugal

- Measures to support c. 6k associations, foundations and cooperatives of social solidarity, houses of mercy and mutual societies
- Reinforcement of Cooperation Agreements by € 50 million
- Maintenance of social security contributions
- Deferral of payments
- Creation of a specific financing line, with mutual guarantee

### Scotland

- Third Sector Resilience Fund as part of a £350m support package. Supports charities and social enterprises who are at risk of closure due to a sharp decrease in income or unable to deliver their services.
- Grants between £5,000-£100,000. In addition there will be up to a further £5m available in fully flexible, 0% interest loans starting at £50,000.
- Additional fund which will disperse up to £25k for those that can find digital ways to support isolated people.

### United Kingdom

- Release of £150 million from dormant accounts to help social enterprises get affordable credit to people who are financially vulnerable and support charities tackling youth unemployment.

Implemented by

## 4a. Social economy specific Government policy (ACP)

### Kenya

- State Department of Cooperatives created the Cooperative Coronavirus Response Committee (CCRC) drawing members from ten key stakeholder organisations

### South Africa

- In South Africa - series of prudential priority measures for co-operative financial institutions on prudential matters, supervisory activities, as well as governance and operational issues.

### Sudan

- Ministry of Trade and industry will spend SDG 10 Billion to deliver essential commodities to local cooperatives

### Funds

- Solidarity Funds in e.g. South Africa, Nigeria, Chad, Ivory Coast, Senegal, Niger and Togo. In South Africa donations are tax exempt and R2+ billion has been raised.
- Youth Entrepreneurship Fund in Chad.
- Nigeria Solidarity and Support Fund supports the existing Social Investment Program. 3-month moratorium on loans under GEEP scheme e.g. Marketmoni

Implemented by

## 4b. Wider policies and relationship to the social economy

### SMEs e.g. France

- Payment deadlines
- Tax rebates
- Deferral of rent payments, water, gas and electricity bills
- Aid of up to 1,500 euros for very small businesses, the self-employed, the liberal professions and the micro-entrepreneurs most affected
- €300bn to guarantee the bank cash lines
- Rescheduling of bank credits
- Maintenance of employment in enterprises through the simplified and reinforced partial unemployment system;
- Support for the treatment of a conflict by the Business Ombudsman;
- A support plan for French exporting enterprises

### Russian Federation

- Tax holiday on all taxes (excluding VAT) and social contributions for Q2 for SMEs, sole proprietors, and NGOs providing social services.

### Cape Verde

- Moratorium on insurance payments and loans repayment during April-September 2020 for household, companies, and non-profit associations, as well as the SMEs.





# 5. Exemplar – French Government

Sarah Prince-Robin, Diplomatic Adviser, French High Commissioner for Social and Solidarity Economy and Social Innovation.

Implemented by





# BREAK

Implemented by



# BREAK - ICR Facility 1-on-1 Clinics

Targeted support virtual, individual support sessions around 1-2 hours



- **Eligibility:** public or private organization based in ACP country
- Slots will be granted based on availability.
- Support will respect a regional balance across the ACP.

Exchange directly  
with us and get  
support for your  
organisation

- Register your interest until 16 July 2020 via [icrfacility@giz.de](mailto:icrfacility@giz.de)
- Indicate your organisation and the questions you want to pose



Implemented by



# 6. Sector-wide and social enterprise responses

Maeve Curtin, Social Enterprise World Forum

Implemented by



# Impact investors and social finance intervening in the absence of significant government investment

## Global funds designed for social enterprises



## Regional funds for social impact businesses



## Global funds accessible to social enterprises



Implemented by

## Advocacy by regional funders



# Intermediary organisations and networks joining together to lobby government and to deliver support



SOCIAL  
ENTERPRISE  
ETHIOPIA

**사회적경제  
새로운 길을 찾다!**

경기도 사회적경제 정책추진단 정책제안 온라인 토론회

경기도 사회적경제 정책추진단은 도민의 삶과 밀접한 6개 분야에서 사회적경제 방식으로 해법을 모색했습니다. 민관이 협력하여 도출한 정책제안들을 발표하고 도민 여러분과 시·군 관계자, 전문가의 의견을 듣는 자리를 마련하고자 합니다. 여러분의 많은 참여 바랍니다.

**2020년 4월 24일(금) 09:30 ~ 17:30**

라이브 방송 보기 코로나19 감염예방을 위하여 온라인으로만 진행합니다. **LIVE ON AIR**

유튜브와 페이스북에서 경기연구원을 검색해주세요.

**YouTube** [youtube.com/c/경기연구원gri](https://www.youtube.com/c/경기연구원gri) **facebook** [facebook.com/gri.kr](https://www.facebook.com/gri.kr)

Implemented by



# Individual social enterprises responding by pivoting, scaling-up services and collaborating to enhance their impact



11,434

Harvest Bags delivered to 30+ communities



Implemented by

# 6c. Sector wide responses (global)

## Australia

- Pro bono support for social enterprises
- Development of national network
- Increased advocacy
- Collaborative food system relief



**SOCIAL TRADERS**

## Malaysia

- Partnership funding model: RM 10m through a matching grant under the PENJANA initiative for social enterprises
- Tax relief for accredited social enterprises
- Collaboration for community feeding and PPE



Implemented by

# 6c. Sector wide responses (ACP)

## Ethiopia

- Collaboration of 35 social enterprises producing quality and affordable masks
- Shifoon Ethiopia campaign endorsed by Lia Tadesse, Minister of Health
- Achieve public health goals, raise the profile of social enterprise



## Kenya

- Member services: risk reductions, health services, social assistance, awareness raising
- Partnerships with British Council and the French Government via the embassy in Kenya continue to build great capacity and develop policy



Implemented by



# 6d. Social enterprise responses

## Ghana, Malawi, Mali

- Global Mamas & Tiwale & Kabakoo
- Producing high quality cloth facemasks



## Jamaica

- EduFocal gamification learning and test prep
- Free access for students based on corporate support

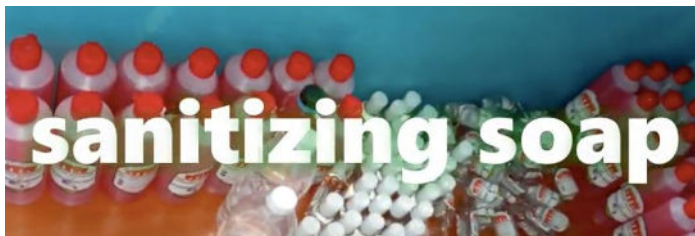


Implemented by

# 6d. Social enterprise responses

## Kenya

- Reafrica sanitation response service
- Education, advocacy, service delivery



## Sudan

- Smart One educational software and learning platforms
- Free app with vital information about Covid-19



Implemented by



# 7. Exemplar – African social enterprises adapting in the current climate

Kissy Agyeman-Togobo, Co-Founder & Managing Partner, Songhai Advisory, Ghana

Implemented by



## 7. African Social Enterprises Adapting in Current Climate: Snapshot



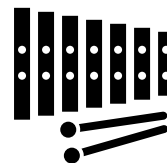
Bridge of Hope, Namibia



Litha Flora, SA



Kawa-Moka, Ghana



Marimba Jam, SA



Active Generation Initiative, Rwanda



TechVillage, Zimbabwe

Implemented by



## 7. African Social Enterprises Adapting in Current Climate: Covid-19 Toolkit

- Agility
- Digital know-how
- Nurture existing relationships
- Strong marketing campaigns
- Preparedness
- Local knowledge-orientated
- Understanding of supply chains
- Authenticity
- Being confident to follow the need, not the trend
- Resilience







## 8. Questions and Answers

Please type your questions or points for discussion into the question window.

Implemented by



# 9. Information on 1-on-1 Clinics

Implemented by



## 9. ICR Facility 1-on-1 Clinics

Targeted support virtual, individual support sessions around 1-2 hours



- Eligibility: public or private organization based in ACP country
- Slots will be granted based on availability.
- Support will respect a regional balance across the ACP.

Exchange directly  
with us and get  
support for your  
organisation

- Register your interest until 16 July 2020 via [icrfacility@giz.de](mailto:icrfacility@giz.de)
- Indicate your organisation and the questions you want to pose



Implemented by

23.07.2020

14 -16 h GMT

WEBINAR

Register  
now!

## Inclusive impact investing and social finance during the COVID-19 crisis and beyond

*Lessons and experiences from African, Caribbean and Pacific countries*

Implemented by